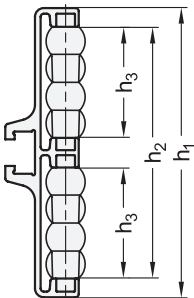
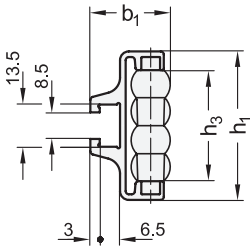
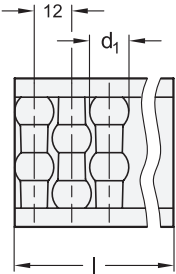


Identification no. 1

Identification no. 2

Type K



elesa

Original design GLA-1 / GLA-2

- 1

Type
- K

Ball-shaped rollers
- Z

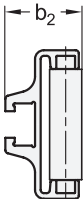
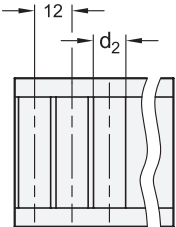
Cylindrical rollers
- ZA

Cylindrically offset rollers

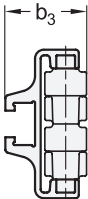
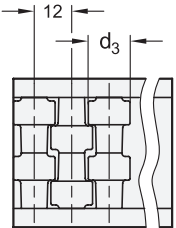
2 Identification no.

- 1 Single row
- 2 Double row

Type Z

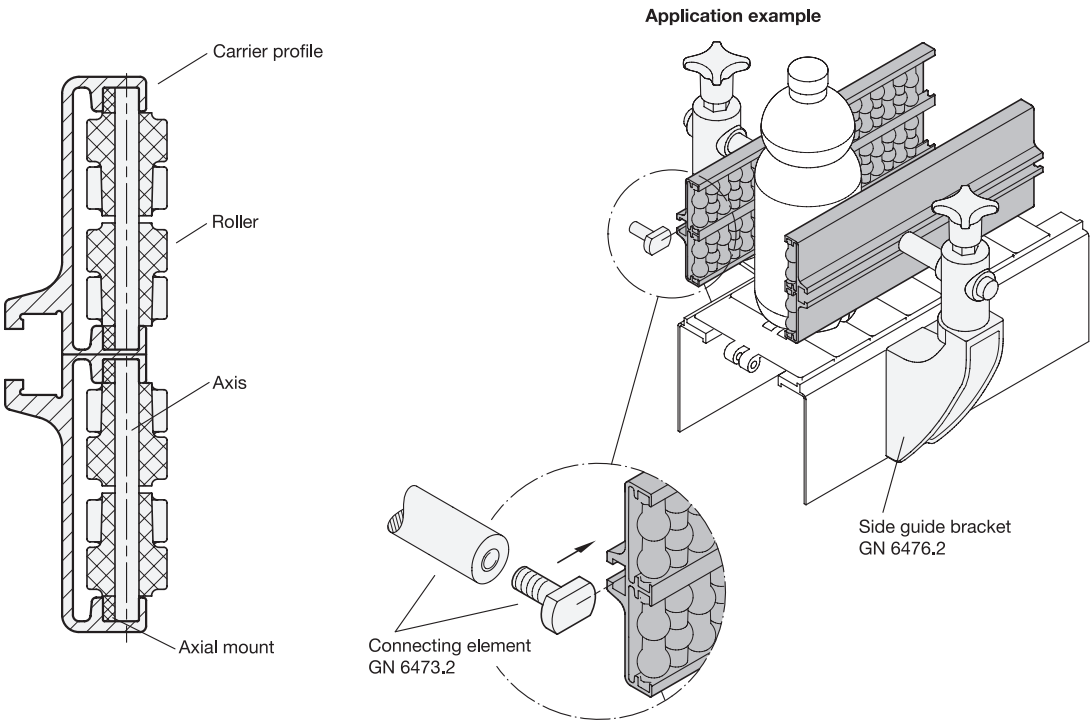


Type ZA



3

Length l		b ₁	b ₂	b ₃	d ₁	d ₂	d ₃	h ₁		h ₂	h ₃	Packaging unit
								Id. no. 1	Id. no. 2			
1440	3000	25,5	25	26	12,5	11,25	13,5	47,5	93	81,5	36	2



Specification

Carrier profile	AL
Aluminum	
Anodized, natural color	
Rollers	
Plastic, polyethylene (PE)	
• Operating temperature -20 °C to 90 °C	
• Gray ● GR	
Axis	
Stainless steel AISI 304	
Axial mount	
Plastic, polyacetal (POM)	
• Operating temperature -20 °C to 90 °C	
• White	

RoHS

Accessory	Page
GN 6471.1 Lead-In Guides	QVX
GN 6471.2 End Caps	QVX
GN 6471.3 Connecting Strips	QVX
GN 6473.2 Connecting Elements	QVX

Side guides GN 6471 are attached to the sides of conveyor sections and their rollers guide the conveyed goods without damage.

The type of rollers used depends on the conveyed material. Type K is used for cans and plastic boxes. For cardboard boxes, type Z can be used for an even material flow. For containers of glass, type ZA is used since it allows easy removal of any contamination due to glass breakage.

Side guides are fastened on the rear side via the T-slot. Connecting elements GN 6473.2 can be used for this purpose, for example.

The side guides are delivered in packaging units of 2 pieces each. They can be shortened at increments of 120 mm in consideration of the installation situation.

see also...	Page
GN 6472 Side Guides	QVX
GN 6476.2 Side Guide Brackets	QVX

Technical Information

Plastic Characteristics	QVX
Stainless Steel Characteristics	QVX

How to order		1	Type
		2	Identification no.
		3	Length l
		4	Material
		5	Color
GN 6471-ZA-1-3000-AL-GR			