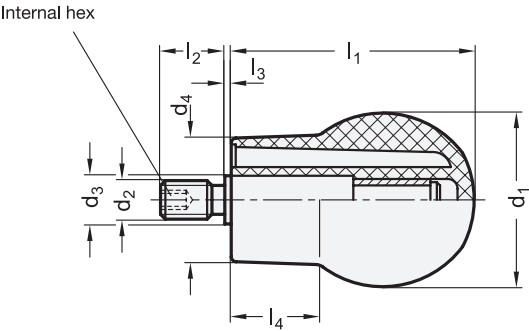




elesa
Original design EBS+x



<div>1</div> <div>d₁</div>	<div>2</div> <div>d₂</div>	d ₃	d ₄ +0,5	l ₁	l ₂	l ₃ ≈	l ₄ ≈
45	M 10	12	32	64	17	1	22

Specification

Handle
Plastic, polypropylene (PP)
• Operating temperature 0 °C to +80 °C
• Black, matte finish

Spindle
Steel
Zinc plated, blue passivated

RoHS

The revolving ball handle GN 596 is in general used where a pulling action is involved such as on vertically positioned handwheels.

see also...	Page
GN 319.2 Revolving Ball Knobs	QVX

Technical Information	
Product Family Ergostyle®	QVX
Plastic Characteristics	QVX
Stainless Steel Characteristics	QVX

How to order	1 d ₁
<div><div>1</div><div>2</div></div> GN 596-45-M10	2 d ₂