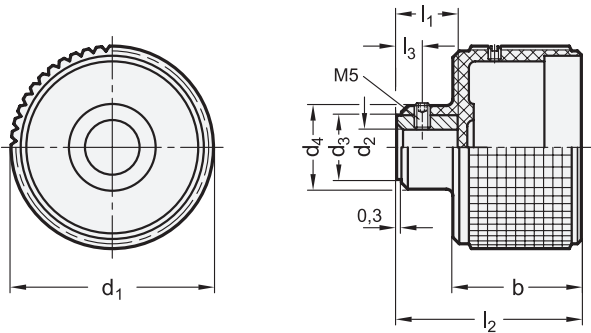




elesa  
Original design MBT. GXX



<div>1</div> <div>d<sub>1</sub></div>	<div>2</div> <div>d<sub>2</sub> H7 Bore</div>	d <sub>3</sub>	d <sub>4</sub>	b	l <sub>1</sub>	l <sub>2</sub>	l <sub>3</sub>	for position indicators GN 000.8 Size	GN 000.3 Size
60	B 8	18	24	35,5	17,5	51	6	42	-
80	B 10	22	28	38	22	58	6	60	60

Specification

<b>Knob</b>
Plastic, Polyamide (PA)
• Glass fiber reinforced
• Operating temperature 0 °C to +100 °C
• Black, matte finish
<b>Bushing</b>
Steel, blackened
<b>Grub screw</b>
Stainless Steel
RoHS

Hand knobs GN 534.8 have a recess in the hub to accept position indicators GN 000.8 and GN 000.3.

They are made to a very high standard from the point of view of quality and design. Worth mentioning in particular is the profile of the rim which is unique for its form and function of these hand knobs.

For applications where these hand knobs are used without a position indicator, hub caps are available to shroud the hub.

see also...	Page
GN 5348 Hand Knobs with Position Indicator (with integrated Position Indicators)	QVX

Technical Information	
Mounting sequence GN 534.8	QVX
ISO Fundamental Tolerances	QVX
Plastic Characteristics	QVX

Accessory	
GN 000.8 Position Indicators (Pendulum System, Analog Indication)	QVX
GN 000.3 Position Indicators (Pendulum System, Digital / Analog Indication)	QVX
GN 576 Hub Caps (for Control Knobs / Handwheels without Postion Indicators)	QVX
GN 826 Clamping Elements (for Adjustable Spindles)	QVX

How to order	1 d <sub>1</sub>
	2 d <sub>2</sub>
GN 534.8-60-B8	



### Installation sequence

1. Install the position indicator to the spindle and fix it with the screw.
2. Turn the spindle to the starting point (0-position).
3. Move position indicator „by hand“ to the 0-position before mounting it.
4. Install the position indicator into the recess of the hub and fix it with a screw.  
Do not apply unnecessarily excessive torque to avoid deformation of the housing!
5. Rotate the handwheel and ascertain that the starting point of the spindle is aligned with the 0-position of the two pointers (GN 000.8) respectively pointer and counter (GN 000.3).  
Should that not be the case the screw has to be loosened and the position indicator adjusted. Tighten the screw again.