

- 2 Type**
- SG** With star knob
  - SK** With wing knob
  - ST** With T-handle
  - RG** With knurled knob  
GN 7336
  - KG** With wing knob
  - HG** With lever

<b>3</b> <b>4</b>												<b>h<sub>1</sub></b>	<b>Latch arm distance A</b>	<b>h<sub>2</sub></b>	<b>s max.</b>
30	16	20	25	28	32	36	40	44	48	52	57	40	20		
30	18	22	26	30	34	38	42	46	50	54	62	40	20		
40	26	30	35	38	42	46	50	54	58	62	67	50	30		
40	28	32	36	40	44	48	52	56	60	64	72	50	30		
50	36	40	45	48	52	56	60	64	68	72	77	60	40		
50	38	42	46	50	54	58	62	66	70	74	82	60	40		
60	46	50	55	58	62	66	70	74	78	82	87	70	50		
60	48	52	56	60	64	68	72	76	80	84	92	70	50		

<b>Specification</b>		<b>1</b>	<b>5</b>
<b>Lock housing</b>			
Zinc die casting	<b>ZD</b>		
<b>Housing collar</b>			
Powder coated			
Black, RAL 9005, textured finish	<b>● SW</b>		
<b>Operating elements</b>			
Plastic, Polyamide (PA)			
Black, matte finish			
<b>Cover cap</b> for Type RG, KG, HG			
Plastic, Polyamide (PA)			
Light gray, matte finish			
<b>All other parts</b>			
Steel zinc plated, blue passivated			
<b>Protection class</b> IP65			
<b>RoHS</b>			
<b>Accessory</b>	<b>Page</b>		
GN 120.2 Protective Guide Plates	QVX		
GN 120.3 Internal Cabinet Handles	QVX		
GN 123 Sheet Metal Punches	QVX		

Latches GN 515 are identical to standard latches GN 115 except for the extended housing. They are operated with a rotation limited to 90°, which moves the latch arm into the locked position behind the frame. The bevels of the latch arm ease the closing of the door.

By installing latch arms with different bend profiles, the latch distance A can be varied from 16 to 92 mm depending on the housing height h<sub>1</sub>, while the extended housing is suitable for a door thickness s up to 50 mm.

Latches GN 515 are supplied with loosely enclosed latch arm.

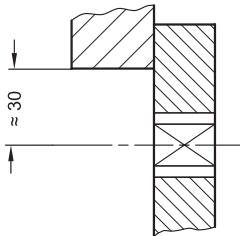
<b>Technical Information</b>		<b>Page</b>
Construction and Assembly Instructions		QVX
IP Protection Classes		QVX
Plastic Characteristics		QVX
Stainless Steel Characteristics		QVX

<b>How to order</b>		<b>1 Material</b>
		<b>2 Type</b>
		<b>3 h<sub>1</sub></b>
		<b>4 Latch arm distance A</b>
		<b>5 Finish</b>
<b>GN 515-ZD-RG-60-55-SW</b>		

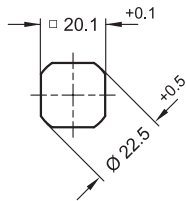


Construction and Assembly Instructions

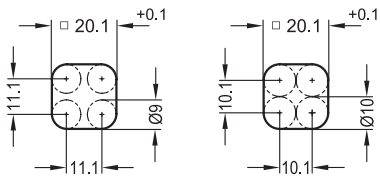
Hole distance



Installation hole for punching or laser machining



Installation hole for drilling or milling



For installation, set a hole in the door, cover or hatch as shown in the outline drawing.  
The required installation hole in the door leaf, is usually generated by punching or laser machining in series production.  
The installation hole diameter can also be created by drilling or milling as shown in the outline drawings.  
When mounting the latches, care should be taken to ensure that the internal parts of the latch do not fall out of the housing when removing or mounting the hex head screw.

Structure

