

- 2

Type
- SCK With wing knob (same lock)
- SCT With T-handle (same lock)

3

4

h <sub>1</sub>	Latch arm distance A											h <sub>2</sub>	s max.
30	16	20	25	28	32	36	40	44	48	52	57	40	20
30	18	22	26	30	34	38	42	46	50	54	62	40	20
40	26	30	35	38	42	46	50	54	58	62	67	50	30
40	28	32	36	40	44	48	52	56	60	64	72	50	30
50	36	40	45	48	52	56	60	64	68	72	77	60	40
50	38	42	46	50	54	58	62	66	70	74	82	60	40
60	46	50	55	58	62	66	70	74	78	82	87	70	50
60	48	52	56	60	64	68	72	76	80	84	92	70	50

Specification	1	5
Lock housing		
Zinc die casting	ZD	
Housing collar		
Powder coated		
Black, RAL 9005, textured finish	● SW	
Operating elements		
Plastic, Polyamide PA		
Black, matte finish		
Key		
Nickel silver with plastic hand piece		
Other parts		
Steel, zinc plated, blue passivated		
Protection class IP65		
RoHS		
Accessory	Page	
GN 120.2 Protective Guide Plates	QVX	
GN 123 Sheet Metal Punches	QVX	

Lockable latches GN 515 are identical to standard latches GN 115 except for the extended housing. They are operated with a rotation limited to 90°, which moves the latch arm into the locked position behind the frame. The bevels of the latch arm ease the closing of the door.

By installing latch arms with different bend profiles, the latch distance A can be varied from 16 to 92 mm depending on the housing height h<sub>1</sub>, while the extended housing is suitable for a door thickness s up to 50 mm.

The latches each come with 2 keys and loosely enclosed latch arm. The key can be removed in both end positions. The lock is standard, so that every lock can be opened with the same key.

Technical Information	Page
Construction and Assembly Instructions	QVX
IP Protection Classes	QVX
Plastic Characteristics	QVX

How to order

1

2

3

4

5

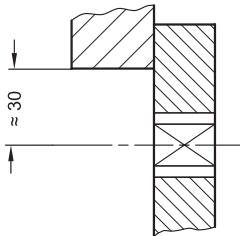
GN 515-ZD-SCK-40-38-SW

1	Material
2	Type
3	h <sub>1</sub>
4	Latch arm distance A
5	Finish

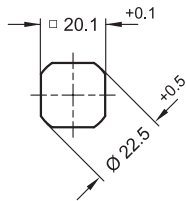


Construction and Assembly Instructions

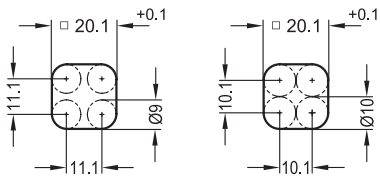
Hole distance



Installation hole for punching or laser machining



Installation hole for drilling or milling



For installation, set a hole in the door, cover or hatch as shown in the outline drawing.  
The required installation hole in the door leaf, is usually generated by punching or laser machining in series production.  
The installation hole diameter can also be created by drilling or milling as shown in the outline drawings.  
When mounting the latches, care should be taken to ensure that the internal parts of the latch do not fall out of the housing when removing or mounting the hex head screw.

Structure

